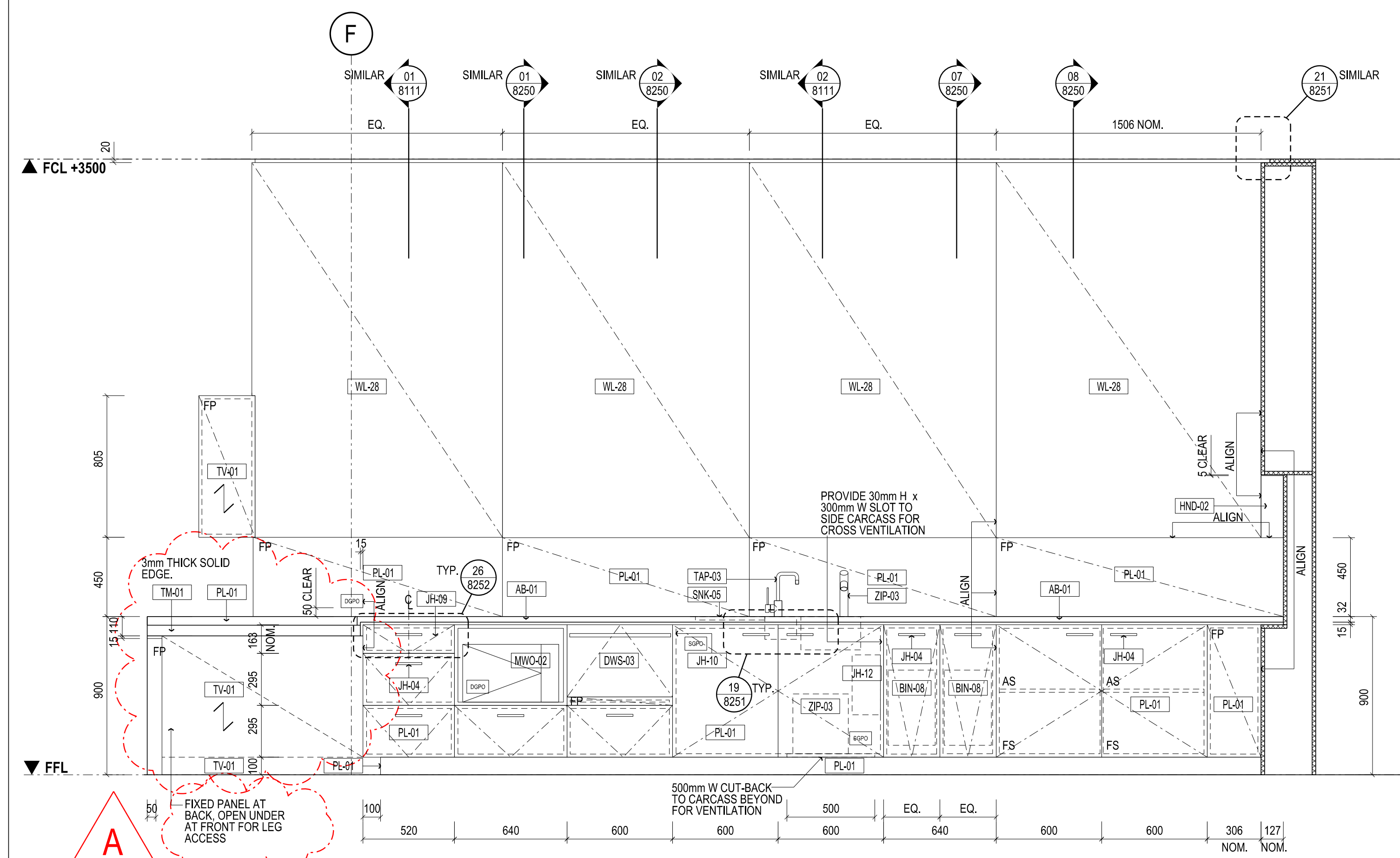


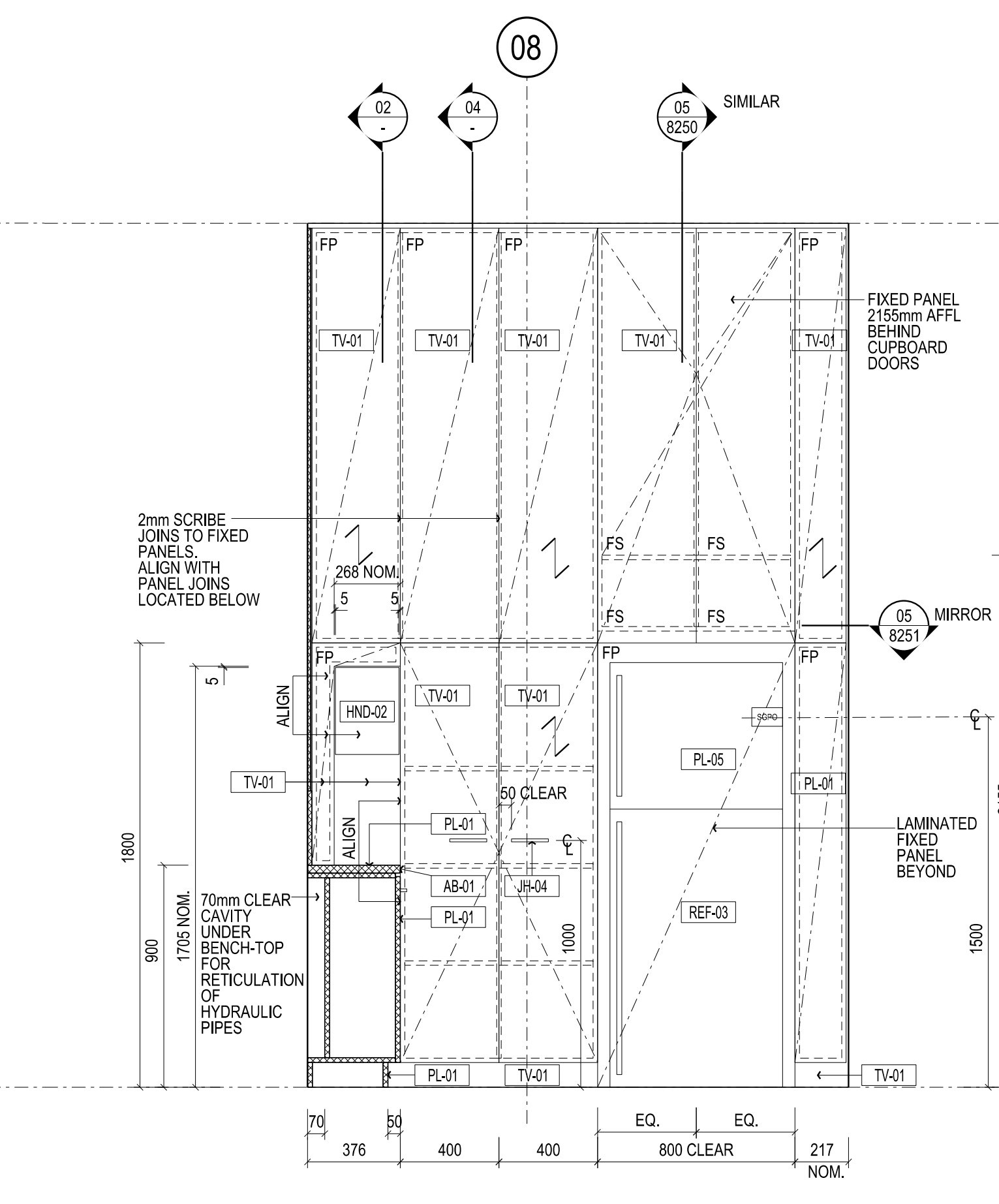
CONTRACTORS SHALL VERIFY JOB DIMENSIONS BEFORE ANY JOB COMMENCES. ALL SHOP DRAWINGS SHALL BE SUBMITTED TO THE SUPERINTENDENT AND MANUFACTURER SHALL NOT COMMENCE FROM THE RETURN OF DRAWINGS UNLESS APPROVED BY THE CONSULTANT. FINISHED DIMENSIONS SHALL TAKE PRECEDENCE OVER SCALED. THIS DRAWING SHOULD BE READ IN CONJUNCTION WITH ALL RELEVANT CONTRACT SPECIFICATIONS AND DRAWINGS COPYRIGHT OF THIS DRAWING IS VESTED IN NADAAA.

General Notes

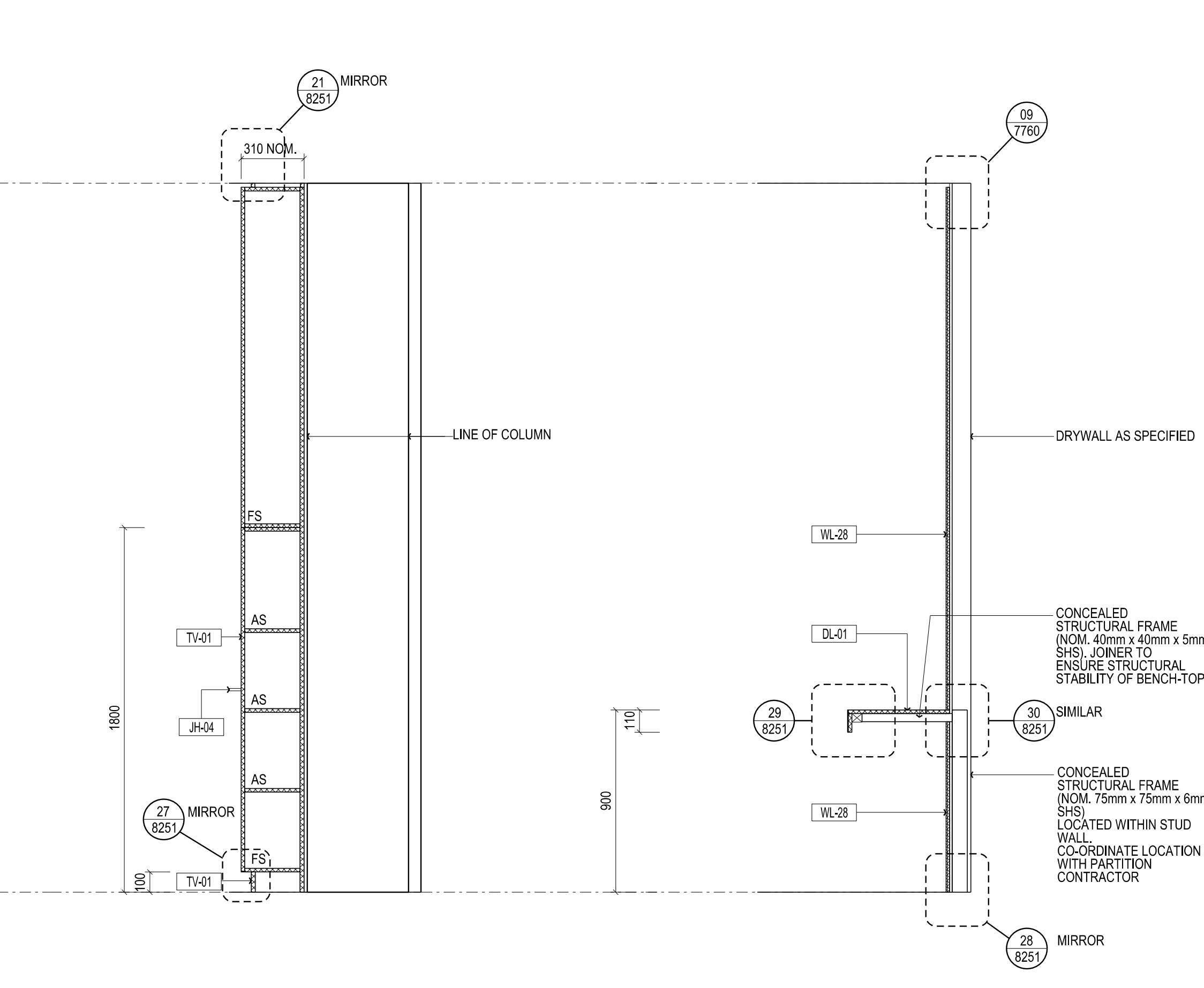
- 18mm E1 MDF CARCASS THROUGHOUT UNLESS OTHERWISE NOTED.
- ALL NON EXPOSED CARCASS TO BE MATCHING LAMINATE UNLESS OTHERWISE NOTED.
- ALL NON EXPOSED CARCASS TO BE BLACK LAMINATE TO JOINERY RECEIVING TIMBER VENEER FINISH, REFER MATERIALS SCHEDULE [ PL-05 ]
- ALL NON EXPOSED CARCASS TO BE WHITE LAMINATE TO JOINERY RECEIVING STAINLESS STEEL CLADDING, REFER MATERIALS SCHEDULE [ PL-01 ]
- ALL EXPOSED EDGES TO TIMBER VENEER PANELS TV-01 TO RECEIVE 3mm THK MATCHING SOLID EDGES, UNLESS OTHERWISE NOTED.
- SPLIT BATTENS TO BE 12mm UNLESS OTHERWISE NOTED.
- APPLY MATCHING LAMINATE ABS EDGING TO LAMINATED BENCHTOPS, UNLESS OTHERWISE NOTED.
- REFER TO '1300 - MATERIALS SCHEDULE' FOR A DESCRIPTION OF THE MATERIAL CODES AS SHOWN ON THIS DRAWING. [ JCH-01 ]
- REFER TO '1400 - FIXTURES, FITTINGS & EQUIPMENT SCHEDULE' FOR A DESCRIPTION OF THE FFAE CODES AS SHOWN ON THIS DRAWING. [ JCH-02 ]
- ALL JOINERY LOCKS TO BE [ JH-02 ] UNLESS OTHERWISE NOTED.
- REFER TO DRAWING AR7300 FOR MOUNTING HEIGHTS FOR ALL SERVICES, FIXTURES, UNLESS OTHERWISE DIMENSIONED ON THE JOINERY ELEVATIONS.
- ALL CORNER JOINTS TO BE MITRED UNLESS OTHERWISE NOTED.
- ALL UPHOLSTERY STITCHING TO MATCH FABRIC COLOUR UNLESS OTHERWISE NOTED.
- DRAWINGS TO BE READ IN CONJUNCTION WITH AR1200 SERIES INTERNAL ARRANGEMENT PLANS TO COORDINATE FIXINGS INTO PARTITIONS WHERE NECESSARY.
- FS = FIXED SHELF
- AS = ADJUSTABLE SHELF
- FP = FIXED PANEL
- PJ = PANEL JOIN, MAXIMUM WIDTH 2mm
- C.O.S = CHECK ON SITE - DIMENSIONS MUST BE VERIFIED ON SITE BY CONTRACTOR PRIOR TO COMMENCEMENT OF CONSTRUCTION.
- NOM = NOMINAL
- TYP = TYPICAL
- SM = SIMILAR
- MIRR = MIRROR
- FCL = FINISHED CEILING LEVEL
- FFL = FINISHED FLOOR LEVEL
- SSL = STRUCTURAL SLAB LEVEL
- C = CENTRELINE
- ↻ = DIRECTION OF GRAIN / FINISH



ELEVATION - JOB-12 LIBRARY STAFF TEAPPOINT SCALE 1:20

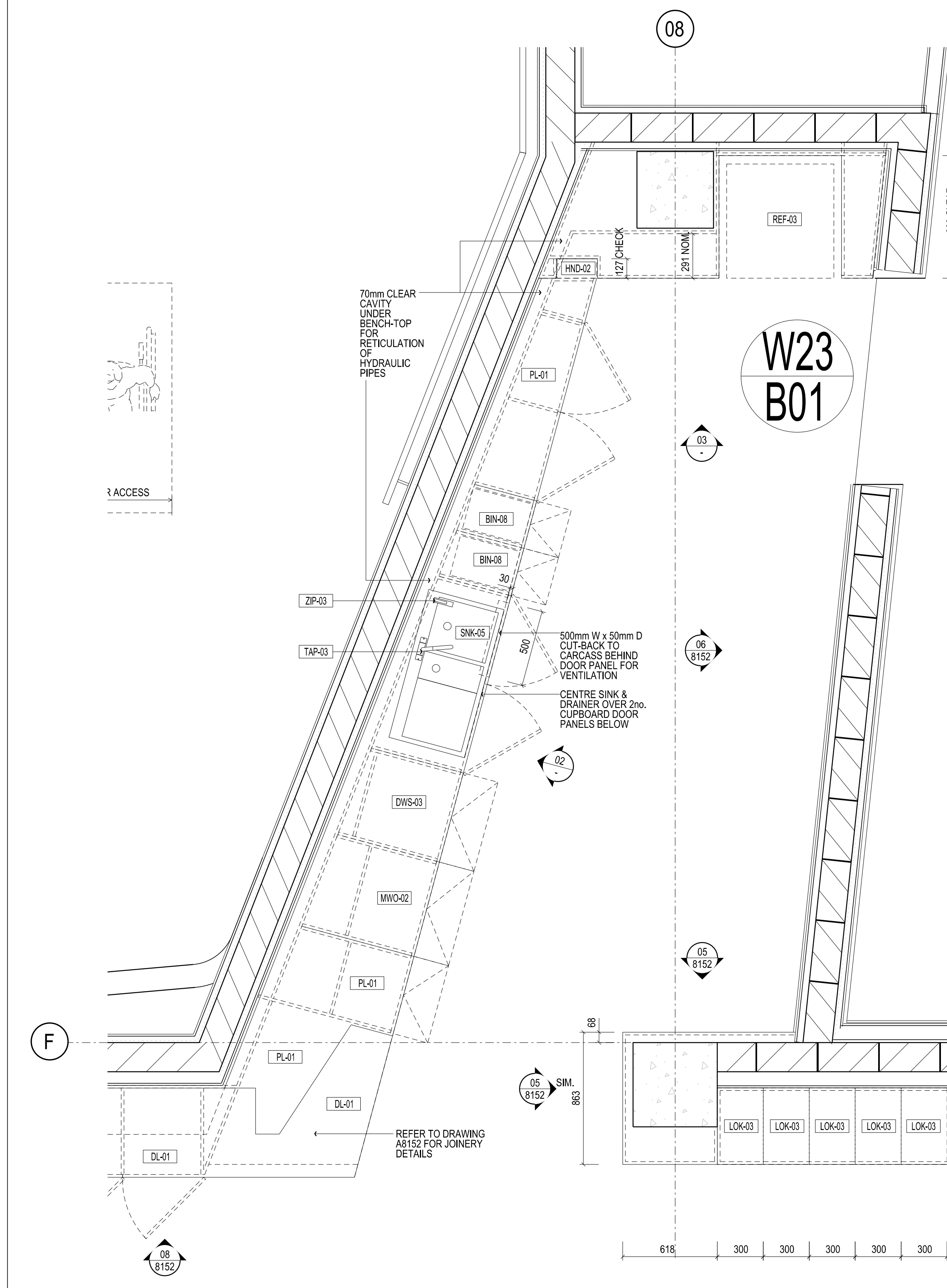


ELEVATION - JOB-12 LIBRARY STAFF TEAPPOINT SCALE 1:20

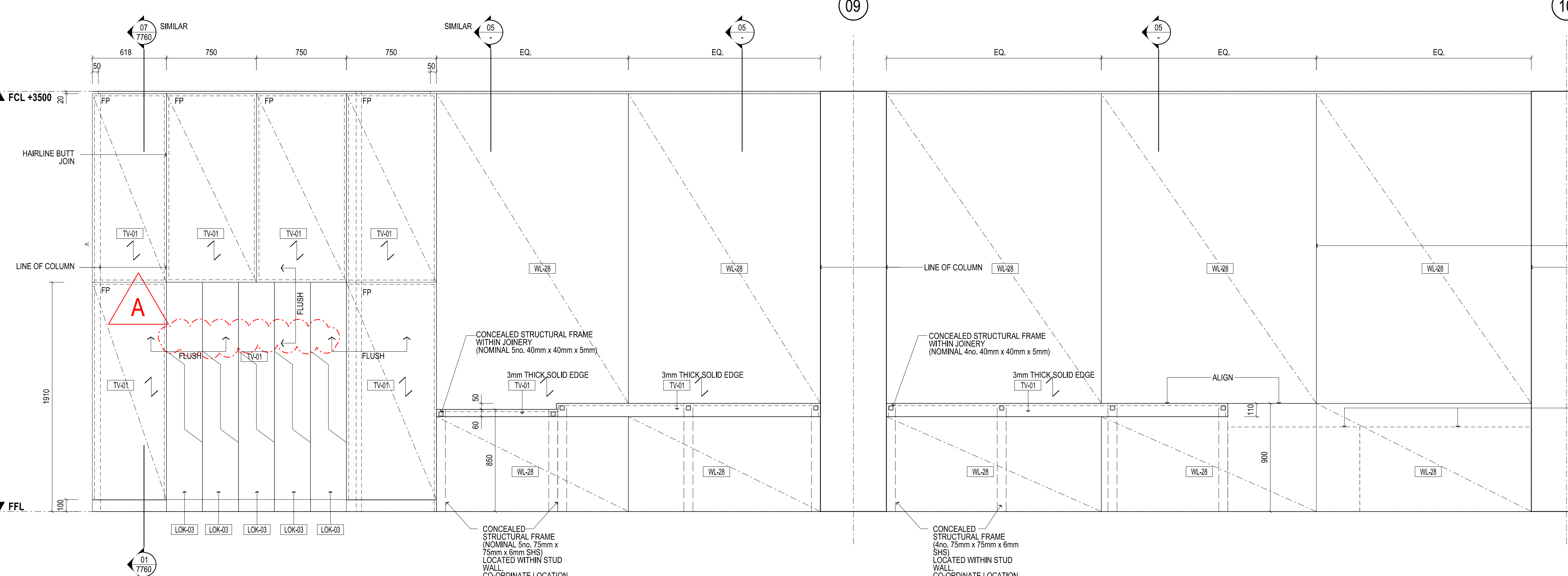


SECTION - JOB-08 LIBRARY STAFF TEAPPOINT SCALE 1:20

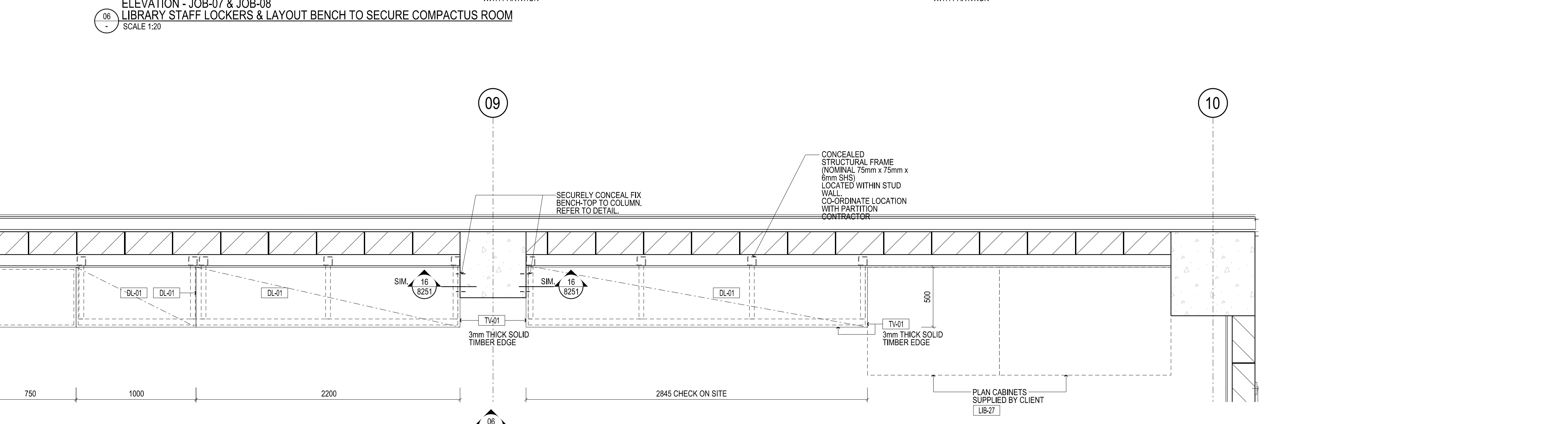
SECTION - JOB-08 LAYOUT BENCH TO SECURE COMPACTUS ROOM SCALE 1:20



FLOOR-PLAN JOB-12, JOB-07 AND JOB-08 LIBRARY STAFF BASEMENT 01 SCALE 1:50



ELEVATION - JOB-07 & JOB-08 LIBRARY STAFF LOCKERS & LAYOUT BENCH TO SECURE COMPACTUS ROOM SCALE 1:20



ELEVATION - JOB-07 & JOB-08 LIBRARY STAFF LOCKERS & LAYOUT BENCH TO SECURE COMPACTUS ROOM SCALE 1:20

Issue	Revision Description	And	Date
A	SG ISSUE FOR CONSTRUCTION	-	20.12.13
09	SG VALUE MANAGEMENT ISSUE	-	28.03.13
08	SG 100% CD - TENDER ISSUE	-	07.09.12
07	SG 90% CD ISSUE	-	10.09.12
06	SG 75% CD ISSUE	-	13.07.12
05	SG 50% CD ISSUE	-	01.06.12
04	SG 25% CD ISSUE	-	20.04.12
03	SG FINAL CD ISSUE	-	24.02.12
NOTES & REFERENCES ADDED			
GEOMETRY UPDATED			
LAYOUT REVISED, UTILITY RELOCATED			
02	SG DO UPDATE	-	20.01.12
01	SG DESIGN DEVELOPMENT ISSUE	-	22.12.11



**NADAAA**  
 NADAAA  
 1520 Washington Street No.2 Boston Massachusetts 02118 USA  
 Telephone +1 817 442 8232 Facsimile +1 888 442 1417 Email nadaaa@nadaaa.com

**John Wardle Architects**  
 25 Rokeby Street, Collingwood, Victoria 3066 Australia  
 Tel: +61 3 8662 0400 www.johnwardlearchitects.com  
 © 2012 John Wardle Architects ABN 83 006 814 268

Client **University of Melbourne Parkville Campus**  
 Project **Faculty of Architecture Building and Planning**  
 Title **JOINERY DETAILS B01 LIBRARY**

Project No.	<b>0913</b>	Scale	1:20 @ A0 1:40 @ A2
Drawing No.	<b>AR8153</b>	Revision	<b>A</b>
Date	Dec 2011	Drawn	KW
Co-Ord	SG	Chk	JA

FILENAME - SFR15  
**FOR CONSTRUCTION**